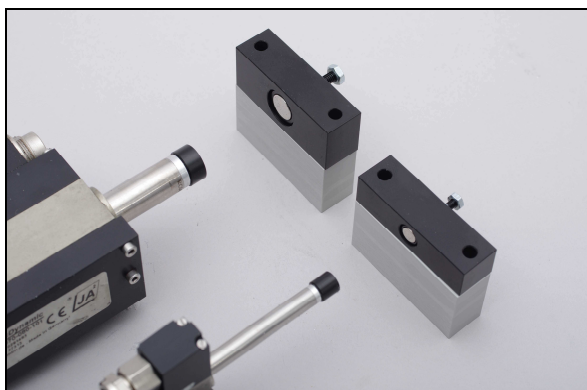


MagStop[®] Magnetic Parking Brake AD55 for Linear Motors

The magnetic parking brake **MagStop[®] AD55** fits our systems that are equipped with QuickShaft[®] linear motors. It is a device that enables a vertical axis to be stopped in the uppermost position, the parking position. An ideal and simple construction element that can safely prevent all moving components from falling down, when power is off. As a functional requirement the axis must be moved to the parking position before the electric energy is switched off.



Magnetic Parking Brake AD55

- not be used für personal protection in safety-relevant applications in accordance with EC Machinery Directive
- two dimensions fitting to LM1247 & LM2070
- passend zu unseren Mechatronik-Systemen mit QUICKSHAFT[®] Linearmotoren
- passive construction element
- very low moving mass

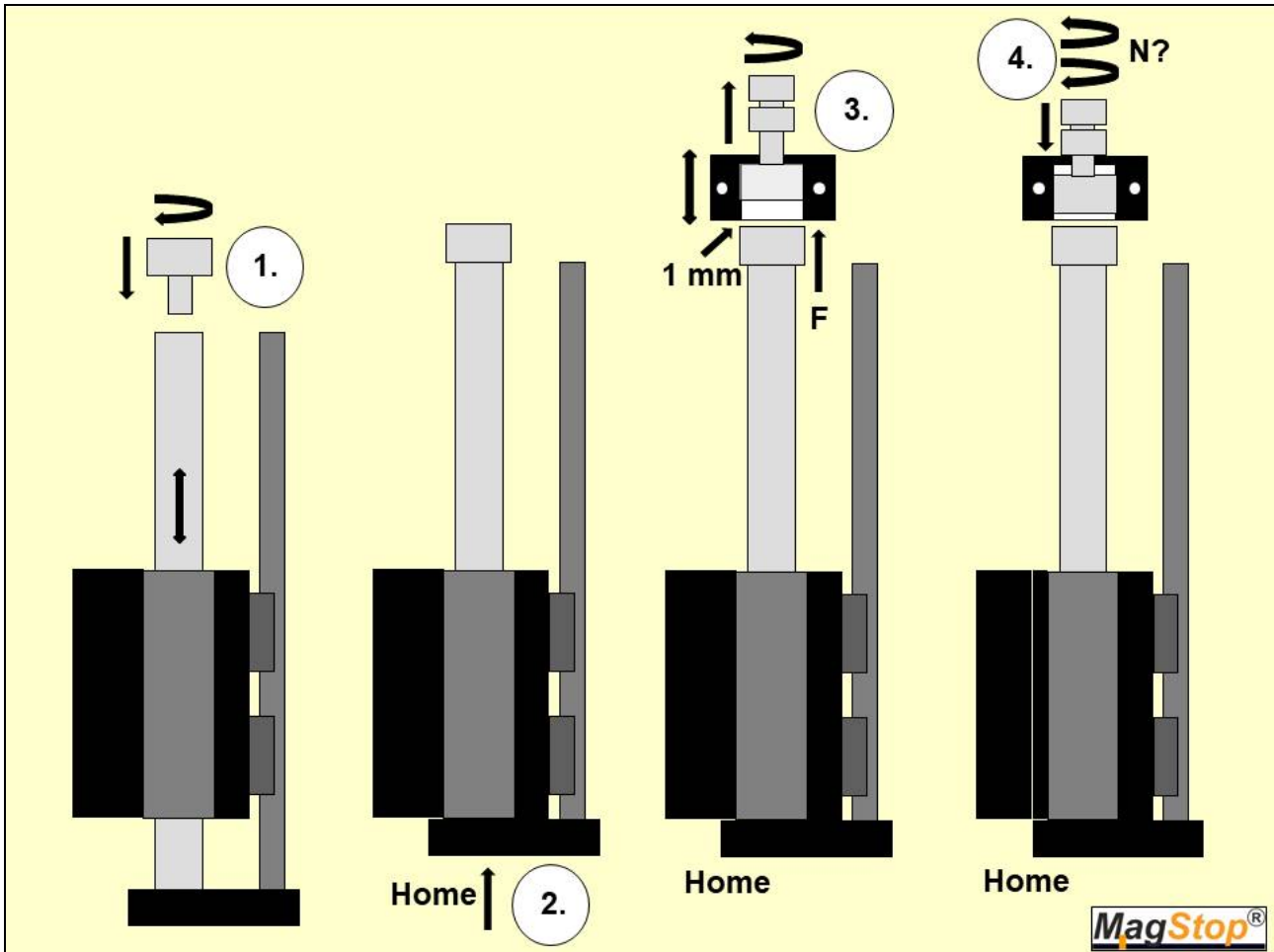


The AD55 magnetic parking brake must not be used for personal protection in safety-relevant applications in accordance with the EC Machinery Directive!

Technical Data Magnetic Parking Brake AD55

Type	AD55-1247	AD55-2070
Operating Data		
attraction force adjustable by air gap [N]	0 to 15	0 to 33
function	In the upper end position of the axis, the linear motor slider with the moving payload is magnetically attracted and held by the adjustable magnetic air gap. When going down, the weight supports the drive. A careful adjustment of the holding force must be carried out depending on the application.	
slider diameter [mm]	7	13
moving mass [Gramm]	2	5
total mass [Gramm]	28	45
operating temperature [°C]	0 to 40	
storage temperature [°C]	-25 to 80	

Installationon Guide Magnetic Parking Brake AD55



js010521.doc
Rev.: 02.05.2021
Technical changes reserved!
QuickShaft® is a registered trademark
of Dr. Fritz Faulhaber GmbH & Co. KG!